

# ALT'O

REF.  
NUS130

TESTED  
140KG

## FULL BODY AND RESCUE HARNESS WITH INTEGRATED BELT



### REGULATION

2016 / 425

### CERTIFICATION

EN 361 : 2002  
EN 358 : 2018  
EN 1497 : 2007  
EN 813 : 2008



neofeu.com

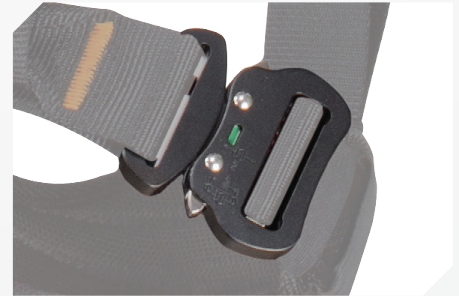
## COMFORT / ACCESSORIES



BACK PAD WITH BREATHABLE  
3D FABRIC



LARGE LEGS AND POSITIONING BELT  
WITH BREATHABLE 3D FABRIC



AUTOMATIC ALUMINUM BUCKLES  
WITH LOCKING INDICATOR



TOOL HOLDERS(X2) + LARGE TEXTILE  
STRINGS FOR TOOL HOLDING (X3)



REMOVABLE LANYARD HOLDER

## ATTACHMENT POINTS



FRONT FALL ARREST ATTACHMENT  
POINT WITH ALUMINUM D RING



BACK FALL ARREST ATTACHMENT  
POINT WITH ALUMINUM D RING



VENTRAL SUSPENSION ATTACHMENT  
POINT BY ALUMINUM D RING



LATERAL ATTACHMENT POINTS  
WITH ALUMINUM D RING FOR  
WORK POSITIONING

## OPTION



INCLUDED ASCENDER ADJUSTER REF. NUS131A  
+ OPTIONAL VENTRAL ASCENDER REF. NBLOCK

## TECHNICAL SPECIFICATIONS

- Water repellent webbing in polyester 44 mm (R ≥ 25 kN)
- Adjustment of shoulder straps, belt and leg straps height through quick buckles
- Back, front, suspension and work positioning D ring in anodised forged aluminium
- Large legs with breathable 3D fabric and automatic alu buckle
- Large positioning belt with breathable 3D fabric, adjustable on height with 3 large textile strings for tool holding and 2 plastic D ring
- Back pad with breathable 3D fabric to facilitate the donning of the harness and increase the comfort of the user
- Static resistance ≥ 15kN
- Weight : 2,2 kg

### Removable accessories included:

- Removable ascender adjuster (Ref. : NUS131A).
- Universal lanyard holder (Ref. : NPORTL).

### Available accessories:

- ALT'O removable seat (Ref. : NUS132).
- Ventral ascender (Ref. : NBLOCK).

## USE

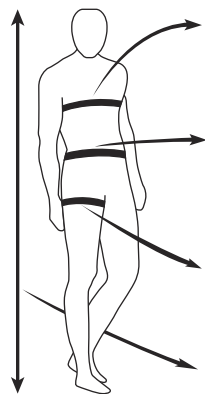
Full body harness and rescue harness with intended to rope access and works on pylons.

## DESCRIPTION

**ALT'O** is a versatile high comfort with a modern design. Its resistant light alloy components makes it a safe and lightweight.

Its design allows fast and easy adjustment and its ergonomics is adapted to any working conditions. The shoulder straps are widely spaced to limit neck shafing.

## SIZES



80 cm	≤	Size S	≤	105 cm
90 cm	≤	Size M-L	≤	115 cm
100 cm	≤	Size XL	≤	135 cm
105 cm	≤	Size XXL*	≤	145 cm
65 cm	≤	Size S	≤	105 cm
85 cm	≤	Size M-L	≤	120 cm
105 cm	≤	Size XL	≤	130 cm
115 cm	≤	Size XXL*	≤	135 cm
45 cm	≤	Size S	≤	65 cm
50 cm	≤	Size M-L	≤	75 cm
60 cm	≤	Size XL	≤	80 cm
65 cm	≤	Size XXL*	≤	90 cm
155 cm	≤	Size S	≤	175 cm
165 cm	≤	Size M-L	≤	188 cm
170 cm	≤	Size XL	≤	200 cm
175 cm	≤	Size XXL*	≤	205 cm

## REFERENCES

<b>NUS130..S</b>	Taille S
<b>NUS130..ML</b>	Taille M/L
<b>NUS130..XL</b>	Taille XL
<b>NUS130..XXL</b>	Taille XXL*

\*on request

