

DIAPASON

distanziatore per imbracatura

KONG ITALY



276.SET.V01

peso: 500 g

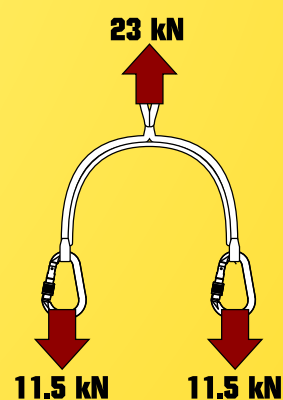
certificazioni:

CE EN 354

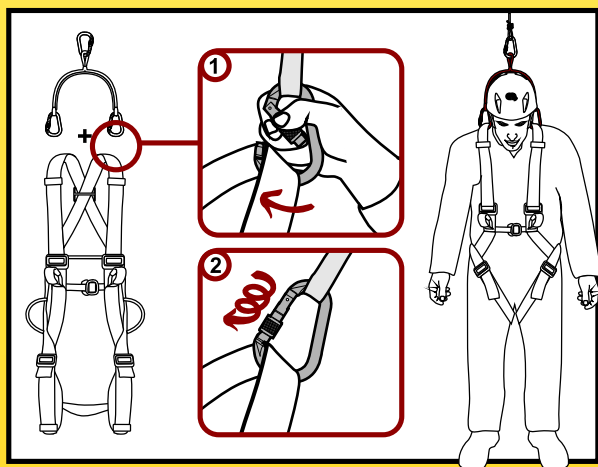
CE EN 358

CE EN 566

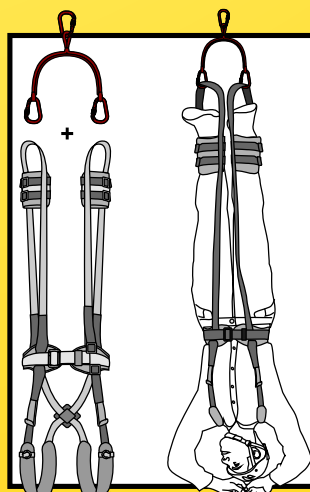
CE EN 795/B



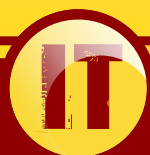
Distanziatore ad alto carico per imbracature da lavoro studiato per la progressione in spazi confinati. Dotato di struttura rigida per non interferire con la testa. Fornito con due connettori a ghiera per il fissaggio agli spillacci dell'imbracatura. Può essere utilizzato anche con l'imbracatura ad assetto capovolto mod. MIKE # 8W.300



DIAPASON + SIERRA DUO



DIAPASON + MIKE



PROFESSIONAL LINE

WWW.KONG.IT

DIAPASON

spacer for harness



276.SET.V01

weight: 500 g

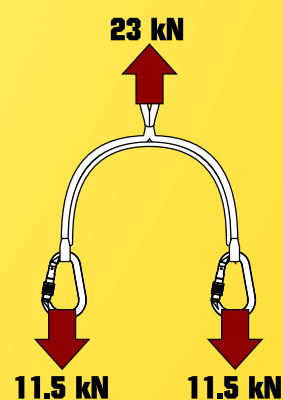
certifications:

CE EN 354

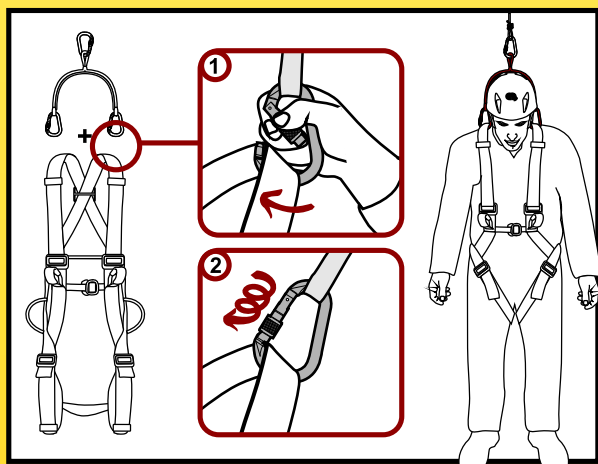
CE EN 358

CE EN 566

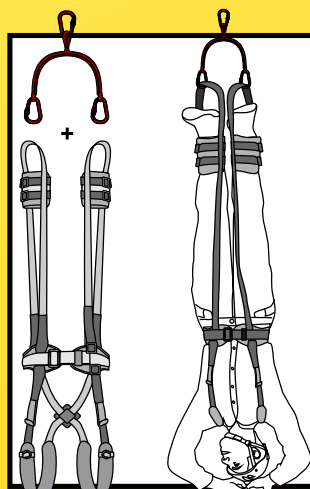
CE EN 795/B



Heavy load spacer for harnesses, designed for progression in confined spaces. Fitted with a rigid structure to not interfere with the head. Supplied with two screw sleeve connectors for attachment to the shoulder of harness. Can also be used with the special harness for overturned descent mod. MIKE # 8W.300



DIAPASON + SIERRA DUO



DIAPASON + MIKE



PROFESSIONAL LINE

WWW.KONG.IT