

8 - SPECIFIC INFORMATION

Master text

The Personal Protective Equipment Category III 277.M00 "WIRE STEEL ROPE" is:

- a flexible connecting element of a personal protection system without length adjustment device;
- an anchor device with one stationary anchor point and without the need for a structural anchor or fixing element to fix it to the structure, intended to be used in personal fall protection systems;
- suitable for use in temperatures higher than -30°C;
- part of a system protecting/preventing against impact caused by fall from a height;
- certified according to EN354:2010 and EN795:2012 type B.

Fig. 1 - Indirect connection – Insert a suitable connector in the loops (A) to connect other devices.

Fig. 2 – Use as anchor – This device can be placed on a structure to create an anchor.

Fig. 3 – Use as a lanyard – This device can be used with or without an energy absorber.

Fig. 4 – Improper and wrong use with energy absorbers – Do not connect more than one user to an energy absorber, or more than one energy absorber to one user.

Compatibility – This device has been designed to be used with:

- energy absorbers according to EN355;
- connectors according to EN362 and/or EN12275;
- harnesses according to EN361, EN813, EN1497, EN1498, and/or EN12277.

Check before and after use - Before and after use, make sure that the device is in an efficient condition and that it is working properly, in particular, check that:

- is suitable for the use you intend to make of it;
- has not been mechanically deformed;
- shows no sign of UV contamination, corrosion and oxidation;
- loops (A) are firmly closed by ferrules (D), and thimbles are not deformed;
- sheath (C) does not expose the wire (B) and does not have cuts, burns, chemical residues, excessive hair, wear;
- markings are still readable.

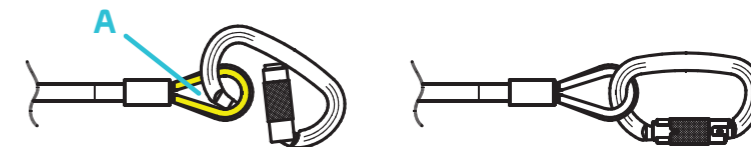
Important:

- this device is not a work positioning lanyard according to EN358;
- pay attention when making knots, they reduce this device strength up to 60%, see figure 3;
- it is recommended that the anchor device is marked with the date of the last inspection carried out;
- this device should only be used as protective equipment against falls from a height and not to lift materials;
- the total length of the system including this device connected to an energy absorber according to EN355 (e.g. device + absorber + connectors) shall not exceed 2 m;
- the maximum displacement and maximum force transmitted measured during testing according to EN795:2012 type B (with an 100mmx100mm HE beam) are 60mm and 9,5kN, these values are referred to the 160cm version and can vary depending on the type of installation and the structure, while longer versions may be subject to greater displacement;
- when placing the device, verify that:
 - the anchor point is positioned above the user;
 - the system which this device is part of is always stretched so as to limit any fall.

Warning:

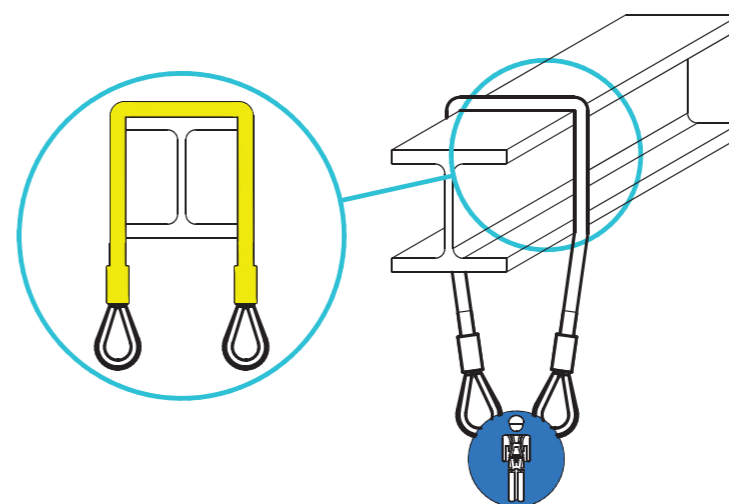
- Beware of entrapment;
- take appropriate measures if the device is used around or close to sharp edges;
- particular conditions (e.g. heat, cold, humidity, oil, dust) could hinder or affect the performance of this device;
- when used in a fall arrest system, the user has to be equipped with a means of limiting the maximum dynamic forces exerted on the user during the arrest of a fall to a maximum of 6 kN;
- the potential falling height must always be lower than 0.5m unless the user is equipped with suitable certified devices (eg. Energy absorbers according to EN355) that protects from dynamic forces exerted on the user during the arrest of a fall.

INDIRECT CONNECTIONS

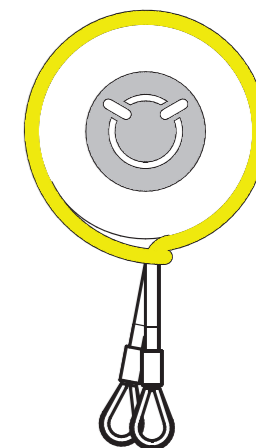


2

MOUNTED ON



LARK'S



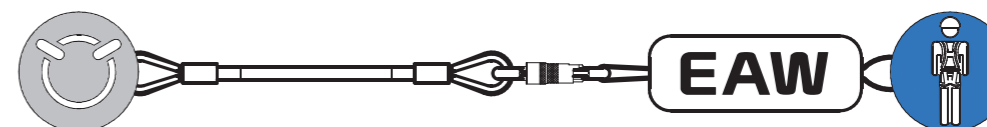
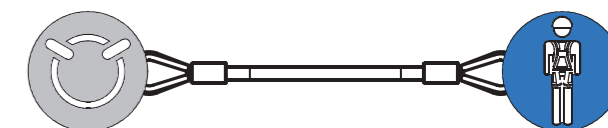
FOOT

3

KNOTS

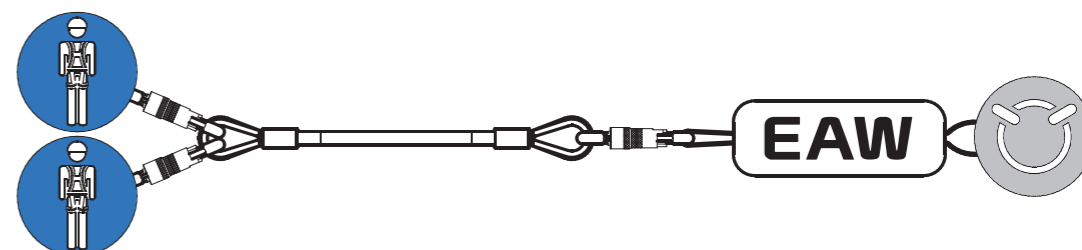
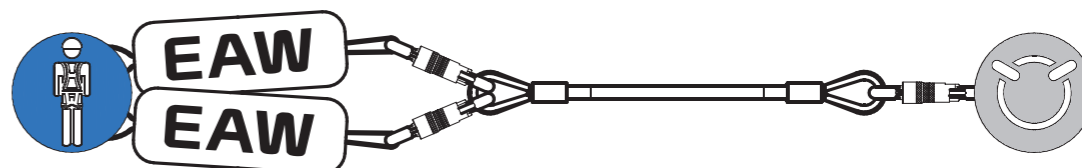


REDUCE STRENGTH



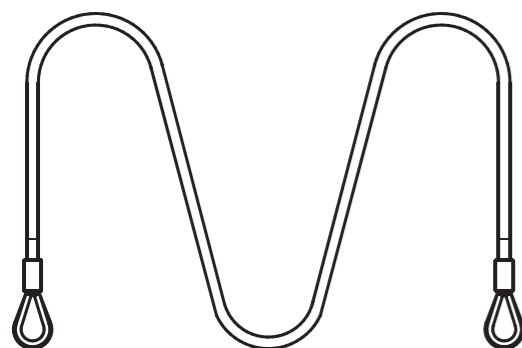
4

WRONG USE WITH ENERGY ABSORBERS



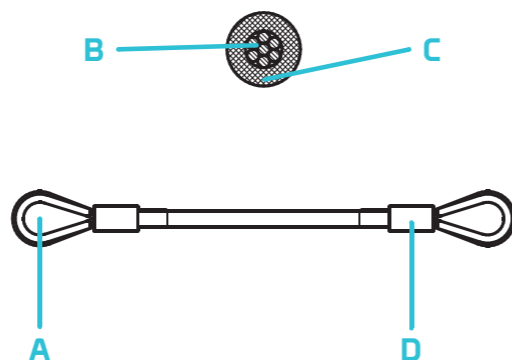
WIRE STEEL ROPE

www.kong.it



EN354:2010
EN795:2012 type B
277.M00

NOMENCLATURE • NOMENCLATURA



EN: (A) Attachment loop, (B) Steel wire core, (C) Polyamide sheath, (D) Copper ferrules.

IT: (A) Asola di fissaggio, (B) Anima in filo d'acciaio, (C) Calza in poliammide, (D) Ghiera in rame.

FR: (A) boucle de fixation, (B) âme en fil d'acier, (C) gaine en polyamide, (D) embouts en cuivre.

DE: (A) Befestigungsschleufe, (B) Stahldrahtseele, (C) Polyamidmantel, (D) Aderendhülsen aus Kupfer.

ES: (A) Lazo de unión, (B) Núcleo de alambre de acero, (C) Funda de poliamida, (D) Casquillos de cobre.

NOMENCLATURE • TERMINOLOGIE • NOMBRES

